

INVERALMOND COMMUNITY HIGH SCHOOL POVERTY PROOFING STATEMENT 2022-23



AT INVERALMOND COMMUNITY HIGH SCHOOL WE RECOGNISE THE NEED TO REDUCE THE COST OF THE SCHOOL DAY FOR ALL OUR YOUNG PEOPLE AND PARTICULARLY FOR OUR YOUNG PEOPLE WHO ARE ALREADY EXPERIENCING POVERTY.

FAMILIES AND YOUNG PEOPLE ADVICE SERVICE (FYPAS)

At Inverlmond Community High School, we work closely with FYPAS.

Some of the things they can provide advice or support on include; advice on benefit entitlement and income maximisation. They can also provide information on any grants available that can support with the cost of the school day – Free School Meals, School Clothing Grants, School Clothing Bank referrals, Education Maintenance Allowance (EMA) as well as advice on disability benefits.

Please call or email using the details below and they will get back to you – Remember to mention Inverlmond CHS to ensure your enquiry is allocated correctly. FYPAS@westlothian.gov.uk or 01506 283 000 opt 4. Face to Face appointments are also available in school.



TRAVEL TO SCHOOL

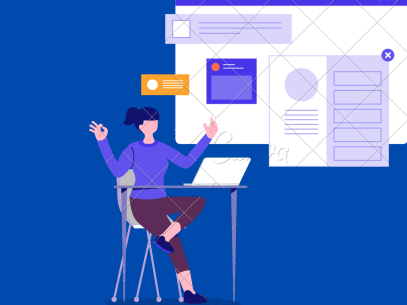


The majority of our pupils walk to school. Many have taken advantage of the Government Free Travel Incentive. Transport is provided for curriculum related courses including college and bespoke timetables. Information regarding home to school transport can be found [here](#).

UNIFORM

At the school we have a dress code policy and consulted with parents and pupils. The items in the dress code can be bought in high street stores/supermarkets at a reasonable price. We also have some items in school that can be obtained from our Wellbeing Centre. Information is available on our website regarding Free School Meals and Clothing Grant and form can be accessed on the following [link](#).

Assistance to complete these forms can be provided by your Family Link.

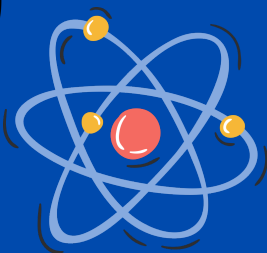


LEARNING

There is no additional cost to parents or pupils applied to learning in Inverlmond Community High School including practical subjects like Home Economics, Art and Craft and Design Technologies. Our departments can provide books, jotters, pencils, pens, rulers and calculators at no extra cost to parents.

TRIPS

At Inverlmond we try to plan trips that are local and have no or a small cost. Other trips have a clear cost and are planned in advance with payment schedules and financial support may also be available. No pupils will be disadvantaged through affordability.



EXTRA-CURRICULAR EVENTS

We offer lunchtime and after school clubs at no cost to pupils or parents and all pupils are invited to attend.

SCHOOL CANTEEN- INVY EATS

Promotion of Free School Meals to families at events throughout the year such as Parents' Evenings.

We have Family Link Workers who can support families to apply for free school meals. Our menu is good value for money and we have a cashless lunch system reducing stigma surrounding free school meals. We also operate a breakfast club offering breakfast items at very low cost. Further information on free school meals can be found [here](#).



CHARITIES

We have an annual calendar available at the start of each school session, highlighting key events and/or information on the school website. This will support our parents in planning out costs throughout the school year. We ask pupils to make an optional donation on dress down days and ensure fundraising events are spread throughout the year. Charities we regularly support are Children in Need and Reverse Advent.